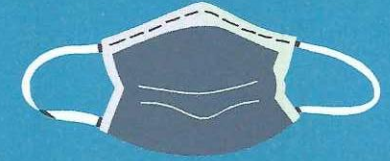
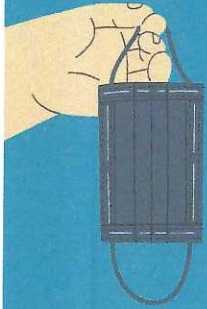




HOW TO USE A CLOTH MASK



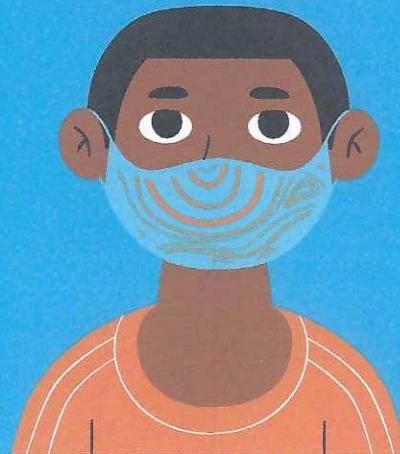
How to Wear



- Wash your hands before putting it on
- Put it over your nose and mouth and secure it under your chin
- Make sure it fits snugly against the sides of your face
- To take off:
 - Handle with ear loops only
 - Don't touch your eyes, nose or mouth

How to Store

- Fold outside corners together
- Place in clean paper bag and wash hands
- Do not place in your pockets for later use



How to Clean

How to wash:

- You can wash with your regular laundry
- Use regular detergent and the warmest appropriate water setting

How to dry:

- Use the highest heat setting and leave in the dryer until completely dry

OR

- Lay flat and allow to dry completely (direct sunlight, if possible).